

# Coin Acceptor Series

**HT-CM 902**

**For S.xxx Q.xxx**



**HENTEL Telecommunication Co., Ltd.**

Address: NO.6 ALLEY 19, LANE 49, KUO CHING ROAD, PAN-CHIAO DIST. NEW TAIPEI CITY, TAIWAN

TEL: +886-2-2962-3391

FAX: +886-2-2962-3857

Website: [http:// www.hentel.com.tw](http://www.hentel.com.tw)



## 1. Introduction

### 1 -1 Overview:

HT-CM902 have the function of validating any kinds of coins. It is applied for KIOSK, 24 HR mini shop, Bank, etc. It can accept 4 kinds of parameters at once.

### 1 -2 Features:

- ◆ Four coin channels available at once.
- ◆ Easy to installation and maintenance to save your time.
- ◆ Anti-string function.

### 1-3 Specification:

Electrical	
Power Source	9VAC-24VAC or 9VDC-24VDC
Power Consumption – Standby	0.6W
Power Consumption – Max	8.4W
Interface	Pulse , RS232

## 2. Description

HT-CM902 can accept four different value coins at the same time, and it is self-learning coin acceptor, if you are not satisfied with the accepting rate, there are two options to solve this problem.

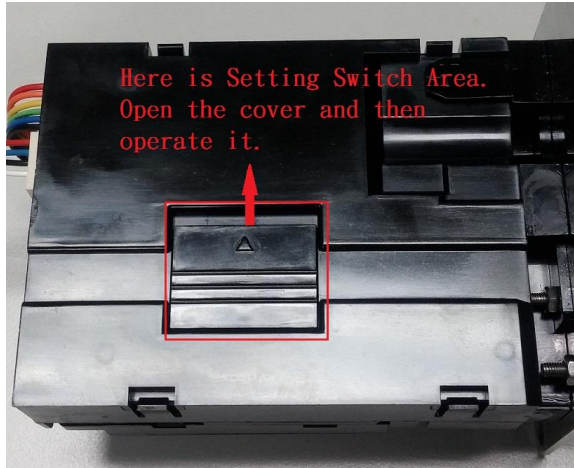
**The first method is to return original setting** ( Please refer to 2-1 How to return the original setting .) **The second method is to set up by yourself** ( 2-2 How to reset parameters by yourself.)

We recommend you to take **the first option(returning to original setting)**,because the original setting is to collect big coin data, accepting rate is more correct and specific than setting by yourself .



## 2-1 How to return the original setting

A) Turn off the power, then open the cover



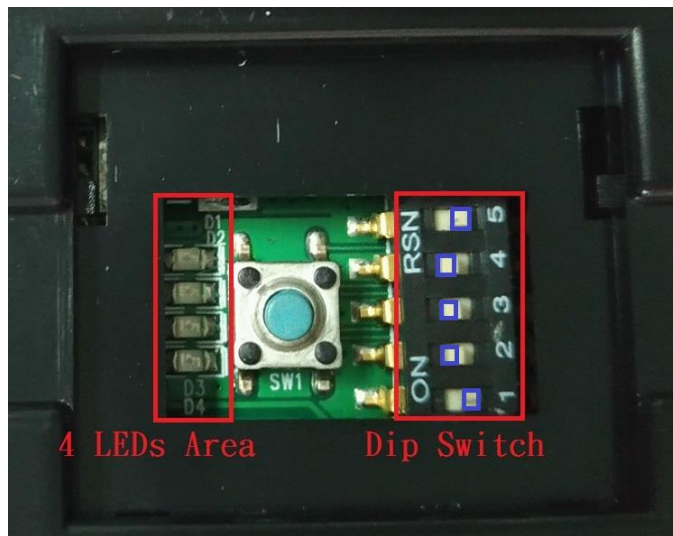
B) Turn the dip switch as below picture( turn dip switch No.4 to the right , No.1,2,3,5 to the left)



C) Turn on the power, then LED will flashing. When LED is flashing, then turn off the power.



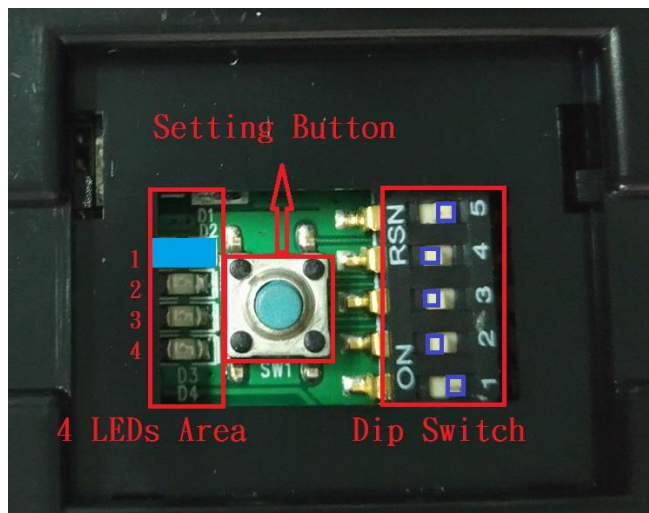
D) Turn the dip switch as below (turn Dip switch No.1 and 5 to right, then No.2,3,4 to the left ),then turn on the power, the original setting is finished .  
So you can insert some coins to test its accepting rate.



## 2-2 How to reset parameters by yourself ?

### operation of setting Coin 1 (Channel 1)

**Step 1 :**



Press “ setting button” once.

When you see the first LED lights up, that means it’s ready to set “ NT\$10 ”.

**Step 2 :**

Insert one coin.

Then the first LED flash , it indicates that the coin “NT\$10 ” is setted



## Step 3 :

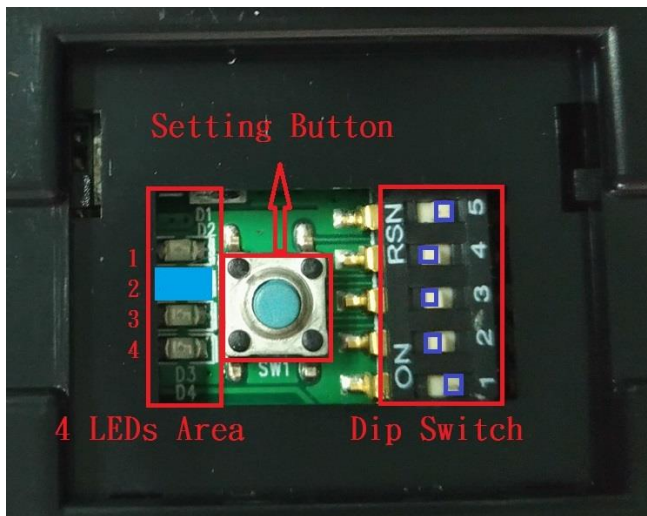
Keep inserting coin for 19 times

Then 4 LEDs get a running flash, it indicates that “NT\$10” is set completely.

Test it to make sure the coin is accepted or not. It's out from right channel. That means it's setting successfully.

## operation of setting Coin 2 (Channel 2)

### Step 1 :



Press “ setting button” twice.

When you see the second LED lights up, that means it's ready to set “ NT\$50 ”.

### Step 2 :

Insert one coin.

Then the first LED flash , it indicates that the coin “NT\$50” is setted

### Step 3 :

Keep inserting coin for 19 times

Then 4 LEDs get a running flash, it indicates that “NT\$50” is set completely.



List for Channel & Pulse		
Channel	Amount	Pulse ( Not be changed )
1	NT\$10	1 pulse
2	NT\$50	5 pulse

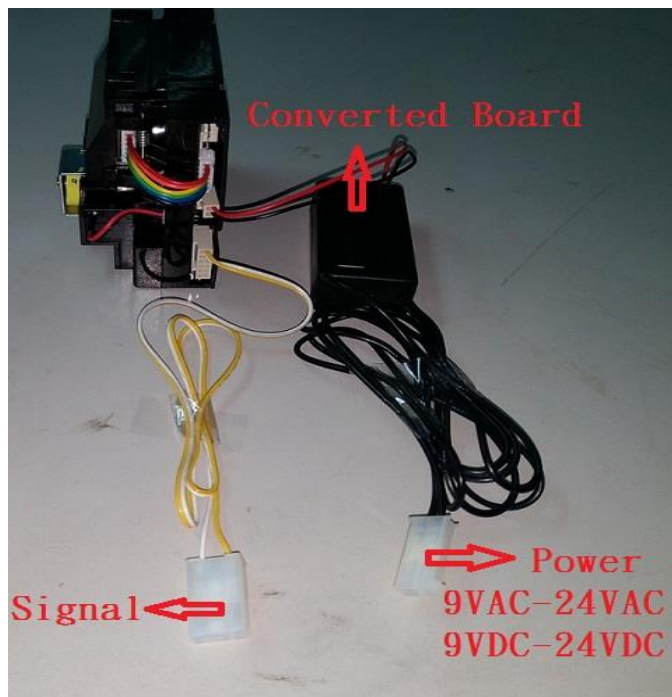
### Reminder :

- When you are setting the coin , the coin will be out from refund slot. When finished , the coin will be into cash box. That mean's it's setting successfully.
- We suggest when you set coin-value,,the best way is to prepare coins of different years,so our machine is more specific to learn its data.
- If you reset parameter of channel 1 , the previous parameter of channel 1 will be covered. Same situation are for channel 2 , channel 3 and channel 4.

## 2-3 How to delete the 4 parameters ?

If you want to delete these 4 parameters, you only press “setting switch” for 3~5 seconds. Then, you will see the 4 LEDs are glittering up and down. That means all the data are deleted.

## 3 . Connector

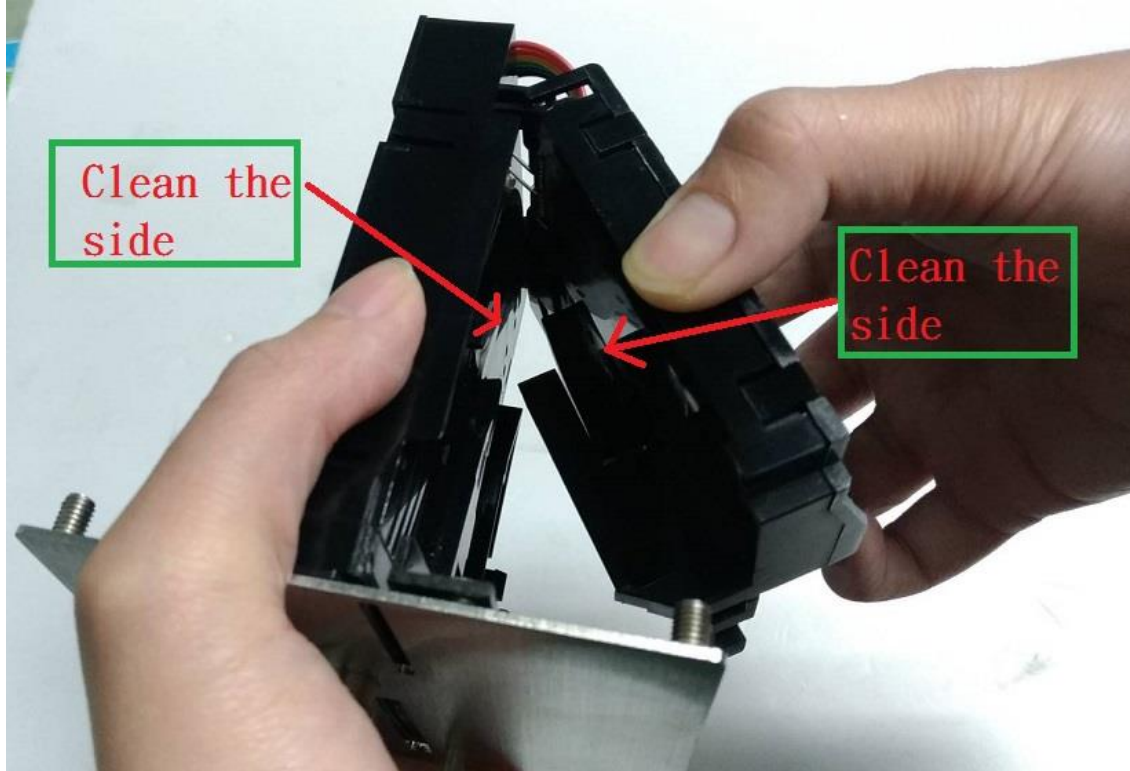






## 4. Clean and Maintenance

In order to let the coin machine has better accepting rate, we suggest that please regularly use dry towel or brush to clean the coin channel of coin machine, like the below picture:

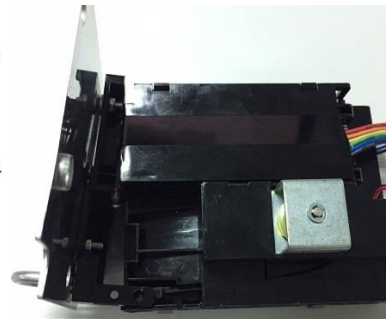


## 5. How to disassemble and assemble it ?

### 5-1 Disassemble



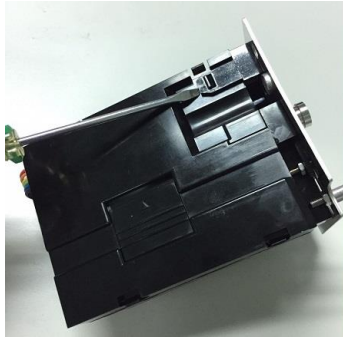
1. 先扳開下方卡榫  
1. First, disassemble the lower mounting clip.



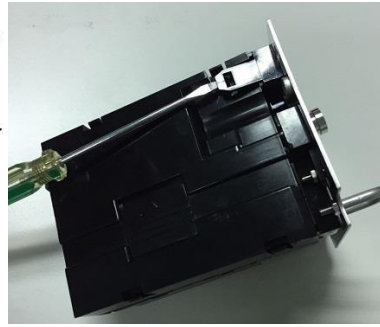
2. 稍微往外拉  
2. Pull slightly.



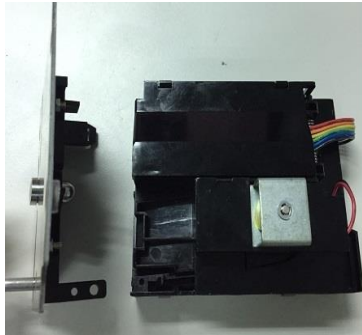
# Coin Acceptor Series HT-CM 902



3. 利用一字起撬開上方卡榫  
 3. Use the tool to disassemble the upper mounting clip.



4. 將卡榫往上扳開  
 4. Pull mounting clip away

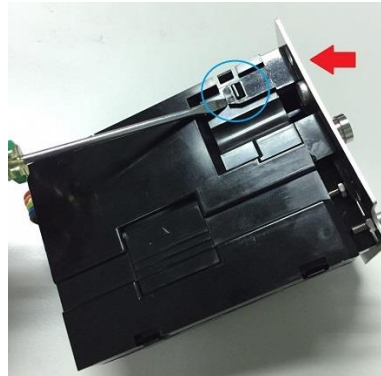


5. 將面板與本體分開即可  
 5. Then, take apart two parts.

## 5-2 Assemble



1. 將(紅圈)面板與主體之間的卡榫對其後，先將上方卡榫扣上  
 1. Aim mounting clips of the plate (red circles) at main structure (red circles). First, assemble the upper mounting clip.



2. 從箭頭所指的方像處推入，將其(藍圈)卡榫扣上  
 2. Push the plate (red arrow) hard so as to assemble it.



3. 從箭頭所指的方向處用力推入，將其(藍圈)卡榫扣上  
 3. Push the plate (red arrow) hard so as to assemble it.



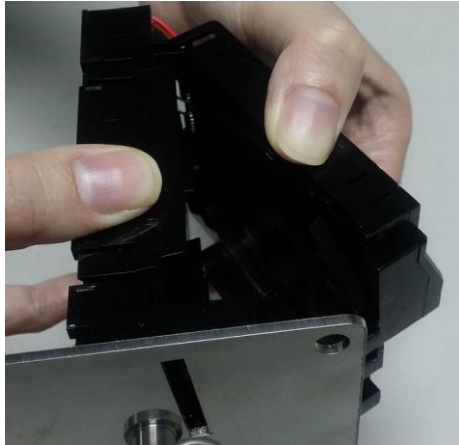


## 6 . Trouble Shooting

### 6-1 Coin Jam

How to release a coin jam ?

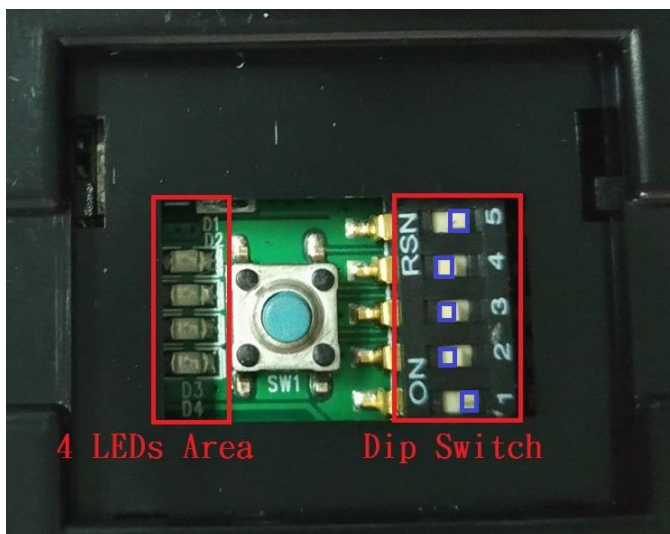
Open the two parts like the below picture and release the coins.



### 6-2 Coin Rejected

When coin acceptor rejected the coins, it may be two situations happened.

#### ■ The first Situation:



Please insert the coin and see whether 4 LEDs flash . If 4 LEDs don't flash , you can refer to following steps :



**Please refer to below steps to resolve above problems.**

**Step 1 :** Please clean the channel regularly.

**Step 2 :** If step 1 is failure , please follow below steps to resolve the problem.

- 1) . First , you can refer to “ **2-1 How to return original setting** “ .
- 2) After operate “ How to return original setting “ and the result is failure . Then Operate “ **2-2 How to reset parameters by yourself** “ to reset coin parameters.

If the error can not be solved after corrective actions or happen again. Please contact HENTEL for technical support.

## ■ The Second Solution :

Please inset coin and see whether 4 LEDs flash. If any one of 4 LEDs flash, it means to break down. Please contact HENTEL to repair.

## 6-3 Coin acceptance rate is not enough good

When coin acceptance rate is not enough good ,it may be three situations happened.

- 1) **When coin Acceptor is stalled into washer or dryer , it may be angle slope of coin acceptor.**
- 2) **Coin attrition**
- 3) **Channel has cotton wadding or dust.**

**Please refer to below steps to resolve above problems.**

**Step 1 :** Please clean the channel regularly.

**Step 2 :** If step 1 is failure , please follow below steps to resolve the problem.

- 1) First , you can refer to “ **2-1 How to return original setting** “ .
- 2) After operate “ How to return original setting “ and the result is failure . Then Operate “ **2-2 How to reset parameters by yourself** “ to reset coin parameters.

If the error can not be solved after corrective actions or happen again. Please contact HENTEL for technical support.